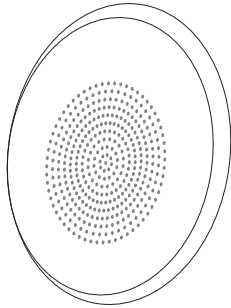


INSTALLATION INSTRUCTIONS

SP-104A-25
SP-104A-70

SP-204A-25
SP-204A-70



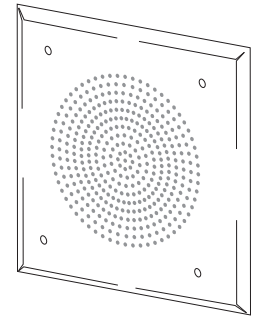
RATING: SP-104A-25; SP-204A-25
SP-104A-70; SP-204A-70

25V RMS, 2 W
70V RMS, 2 W

SPEAKER COIL IMPEDANCE:
SPEAKER FREQUENCY RANGE:
SOUND PRESSURE LEVEL:

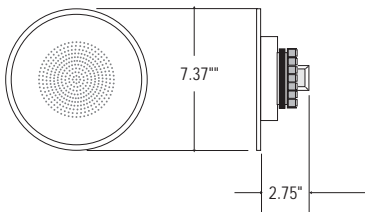
8 OHMS
320 TO 11000HZ
1KHZ @ 3m, 85 db min

dBA at 10 ft. (3m) as measured in reverberant room per UL 1480.
Meets or exceeds 85 dBA at 10 ft. (3m) in an anechoic chamber using highest wattage tap per ULC-S541-1999

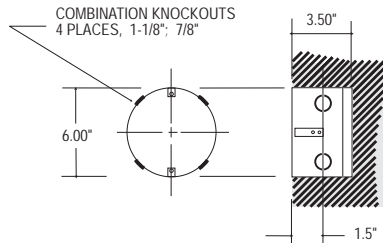


4" ROUND SPEAKER

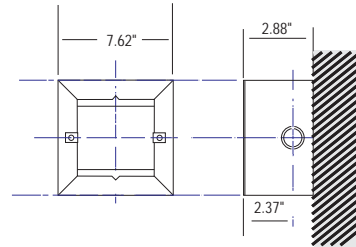
4" SQUARE SPEAKER



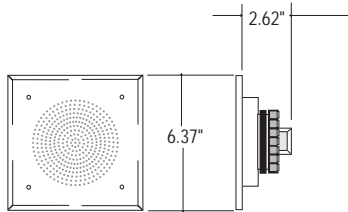
SP-104A 4" ROUND SPEAKER



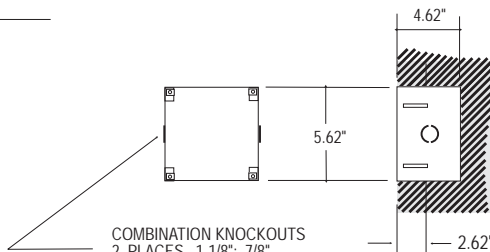
IB-104 FLUSH MOUNTING BACKBOX FOR SP-104A SPEAKER



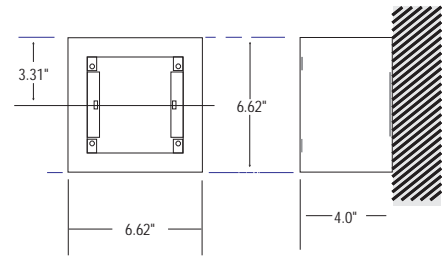
IB-304 SURFACE MOUNTING BACKBOX FOR SP-104A SPEAKER



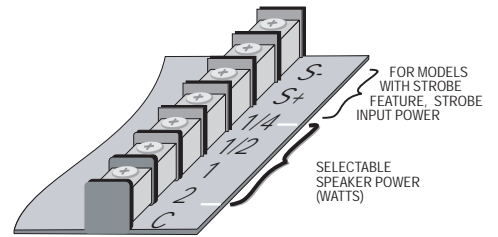
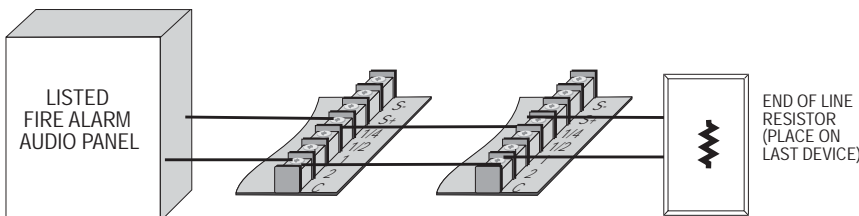
SP-204A 4" SQUARE SPEAKER



IB-204 FLUSH MOUNTING BACKBOX FOR SP-204A SPEAKER



IB-404 SURFACE MOUNTING BACKBOX FOR SP-204A SPEAKER



Directional characteristic as measured at 70V 2W tap for 1/3 octave spectrum at 3150 HZ

Direction	Angle	O.S.P.L.(dBA) (horiz.)	O.S.P.L.(dBA) (vert.)	Direction	Angle	O.S.P.L.(dBA) (horiz.)	O.S.P.L.(dBA) (vert.)
Left	Reference	88.4	88.4	Right	Reference	88.5	88.5
	10	88.0	88.0		10	88.2	88.2
	20	87.5	87.5		20	87.6	87.6
	30	86.9	86.9		30	87.3	87.3
	40	86.6	86.6		40	87.0	87.0
	50	86.2	86.2		50	86.7	86.7
	60	85.4	85.4		60	85.6	85.6
	70	84.5	84.5		70	84.7	84.7
	80	83.1	83.1		80	83.5	83.5
90	81.3	81.3	90	82.2	82.2		

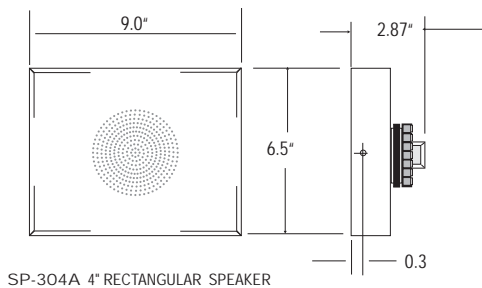
INSTALLATION INSTRUCTIONS

SP-304A-25
SP-304A-70

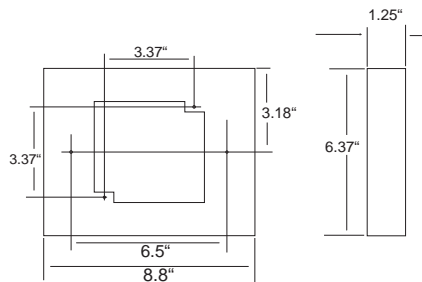
RATING: SP-304A-25 25V RMS, 2 W
SP-304A-70 70V RMS, 2 W

SPEAKER COIL IMPEDANCE: 8 OHMS
SPEAKER FREQUENCY RANGE: 320 TO 11000HZ
SOUND PRESSURE LEVEL: 1KHZ @ 3m, 85 db min

dBA at 10 ft. (3m) as measured in reverberant room per UL 1480.
Meets or exceeds 85 dBA at 10 ft. (3m) in an anechoic chamber using highest wattage tap per ULC-S541-1999

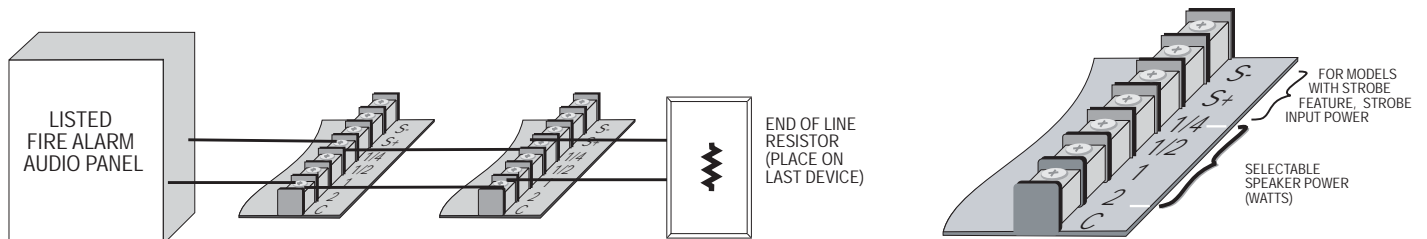


SP-304A 4" RECTANGULAR SPEAKER



IB-604 FLUSH MOUNTING BACKBOX FOR SP-304A SPEAKER

CAUTION
DO NOT LOOP SIGNAL CIRCUIT FIELD WIRES AROUND TERMINALS. ELECTRICAL SUPERVISION REQUIRES WIRE RUN TO BE BROKEN AT EACH END



Directional characteristic as measured at 70V 2W tap for 1/3 octave spectrum at 3150 HZ

Direction	Angle	O.S.P.L.(dBA) (horiz.)	O.S.P.L.(dBA) (vert.)	Direction	Angle	O.S.P.L.(dBA) (horiz.)	O.S.P.L.(dBA) (vert.)
Left	Reference	88.4	88.4	Right	Reference	88.5	88.5
	10	88.0	88.0		10	88.2	88.2
	20	87.5	87.5		20	87.6	87.6
	30	86.9	86.9		30	87.3	87.3
	40	86.6	86.6		40	87.0	87.0
	50	86.2	86.2		50	86.7	86.7
	60	85.4	85.4		60	85.6	85.6
	70	84.5	84.5		70	84.7	84.7
	80	83.1	83.1		80	83.5	83.5
	90	81.3	81.3		90	82.2	82.2