

UIMA

USB TO RS-485/232 CONVERTOR

UIMA Windows Driver Installation Instructions

There are two important components to installing the UIMA on your computer, Installing the USB Serial Convertor and Installing the USB Serial Port. Also included are instructions on Verifying that Windows Recognizes the USB Serial Convertor and Port. The drivers for both the USB Serial Convertor and USB Serial Port are included on the accompanying CD ROM.

Installing the USB Serial Convertor Driver

Step 1: Insert CD Driver Disk for Adapter product in the CD-ROM Drive.

Step 2: Connect the adapter to a spare USB port on your PC, and find the new hardware wizard



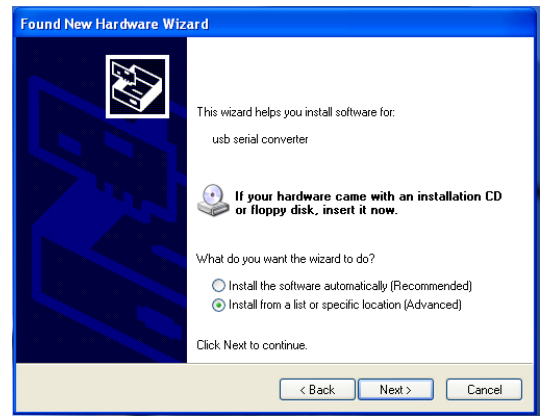
Step 3: The following screen will show
Select the circled Converter Product Driver



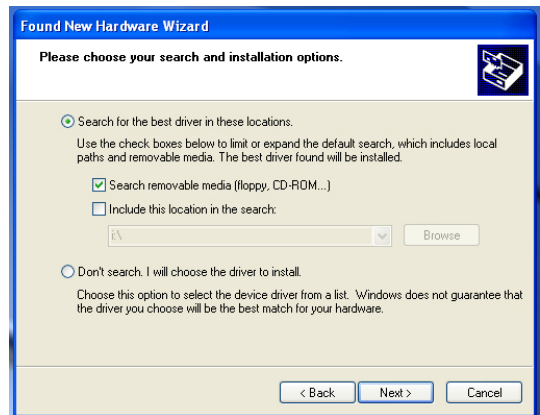
Step 4: Select **No, not this time**
Click **Next** to continue



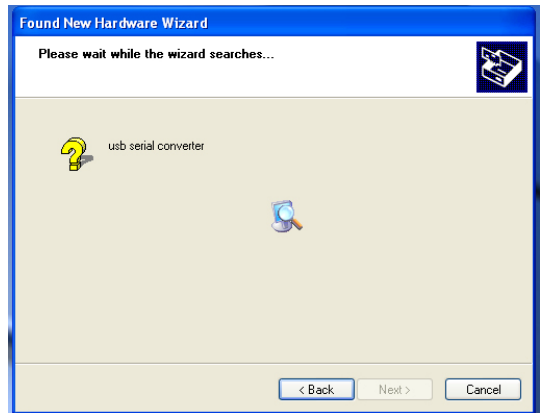
Step 5: Select **Install from a list or specific location (Advanced)**
Click **Next** to continue



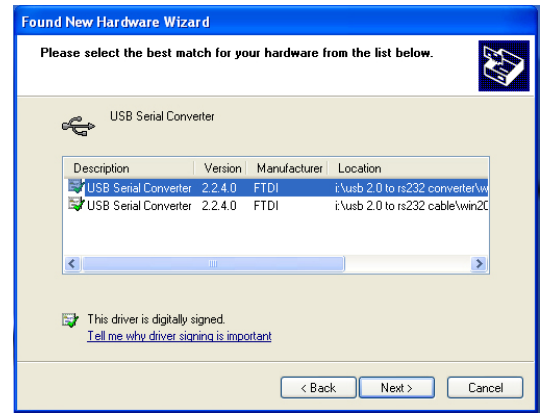
Step 6: Select **Search removable media (floppy, CD ROM...)**
Click **Next** to continue



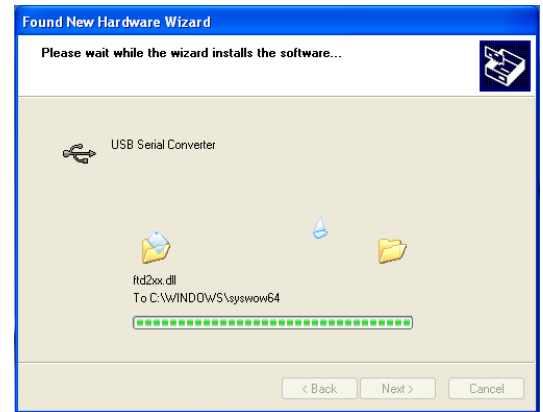
Step 7: Auto search for the corresponding driver in the CD



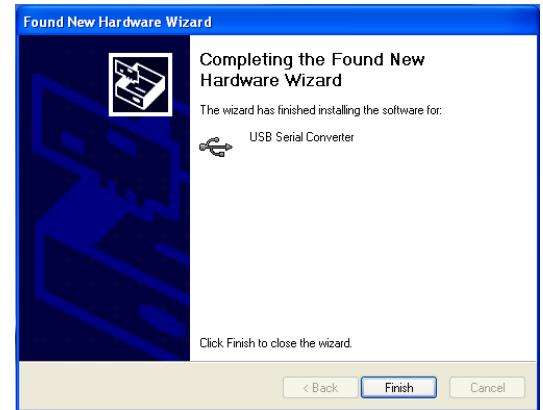
Step 8: You will now see two options which are available to install
 Choose the **USB 2.0 TO RS232 Converter** driver
 Click **Next** to continue



Step 9: The wizard has started installation and will copy the required files to your system



Step 10: Click **Finish** to close the wizard



Installing the USB Serial Port

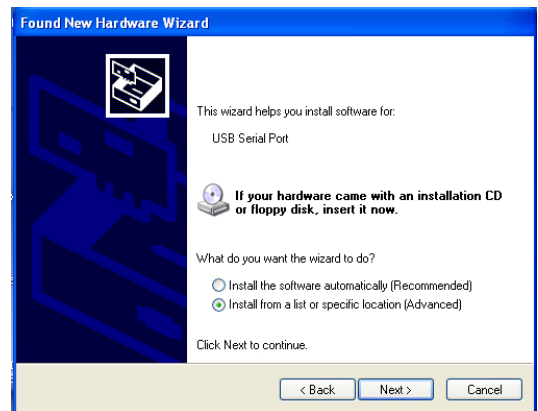
Step 11: Find new com port



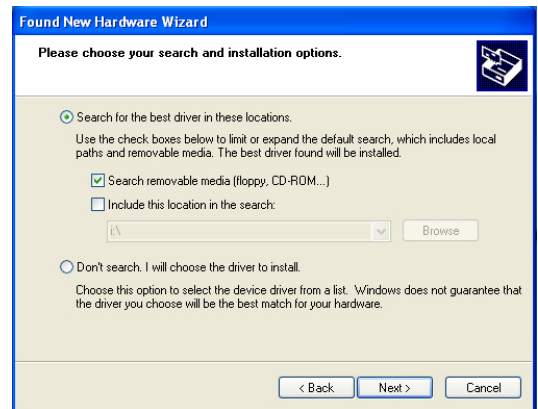
Step 12: Select **No, not this time**
Click **Next** to continue



Step 13: Select **Install from a list or specific location (Advanced)**
Click **Next** to continue



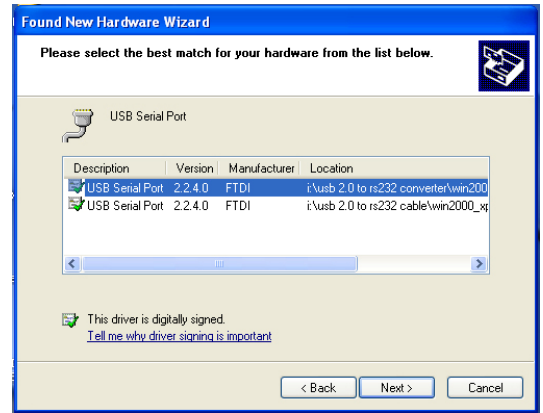
Step 14: Select **Search removable media (floppy, CD-ROM...)**
Click **Next** to continue



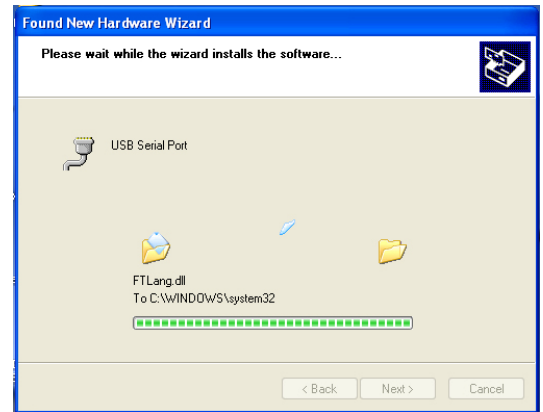
Step 15: Auto search for the corresponding driver in the CD



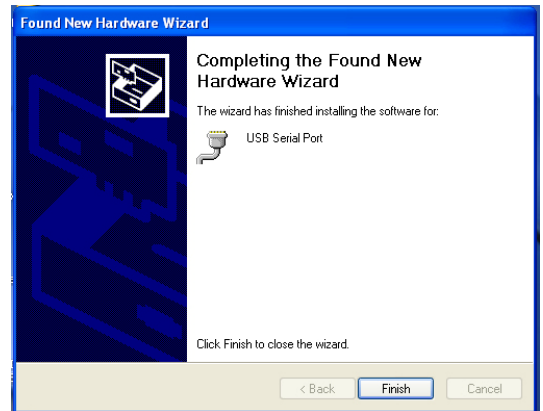
Step 16: Choose the correct type of the driver to match the version of Windows that your computer is using
2000, XP, or Vista
 Click **Next** to continue



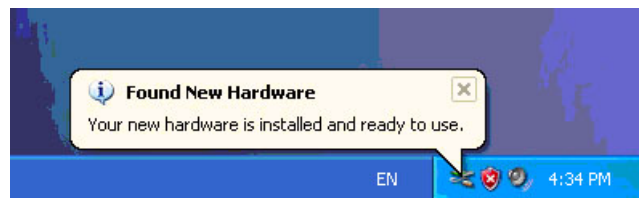
Step 17: The wizard has started installation and will copy the required files to your system



Step 18: Installation completed
 Click **Finish** to close the wizard

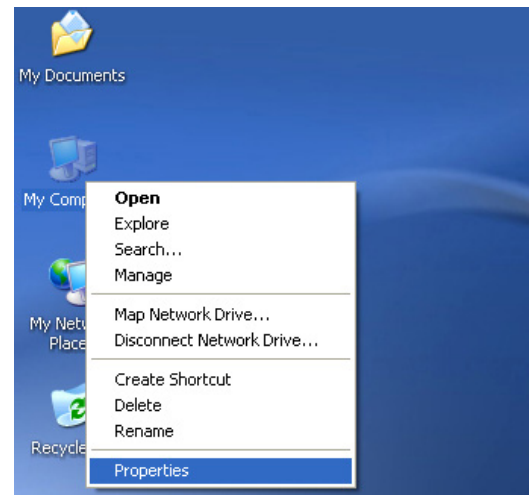


Step 19: **Your new hardware is installed and ready to use**

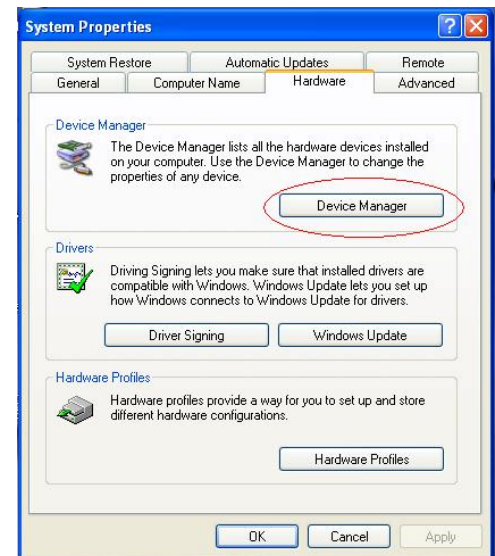


Verifying that Windows Recognizes the USB Serial Converter and Port

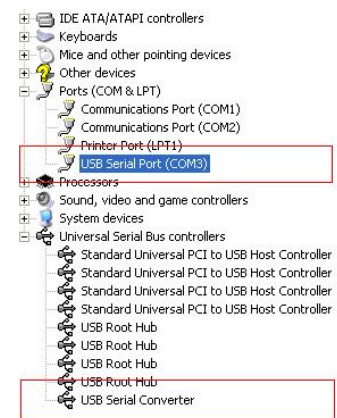
Step 20: To Verify that Windows has properly recognized your USB Serial Converter and Port, right click **My Computer** and then click **Properties**.



Step 21: Select **Device Manager** in the **Hardware** of the interface **System Properties**

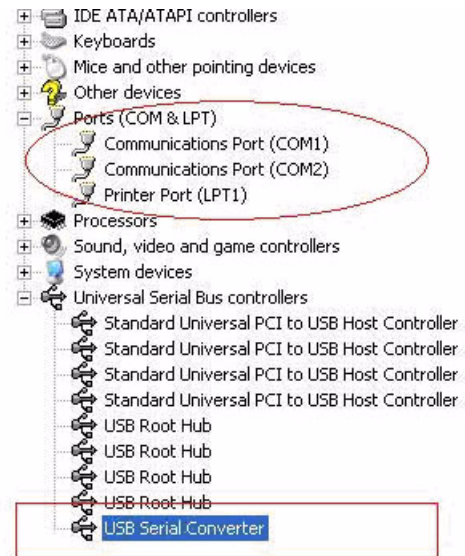


Step 22: Here you can view the hardware devices installed on your computer

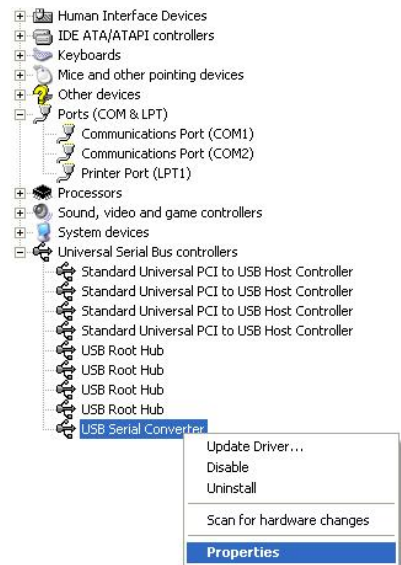


Remarks

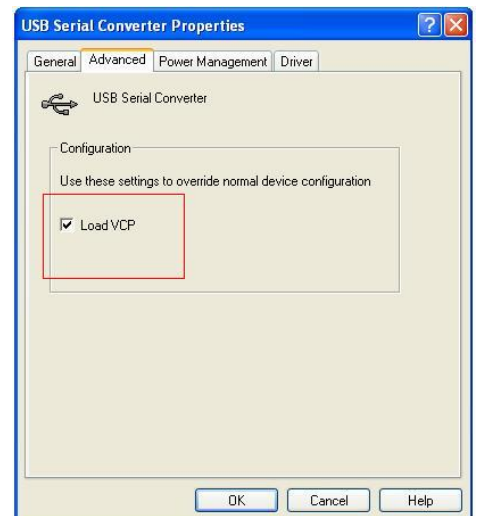
After installation, if you can see **USB Serial Converter** from the **Device Manager** but cannot see **USB Serial Port (COM X)** please complete the following steps



Step 24: Right click **USB Serial Converter**
Click **Properties**



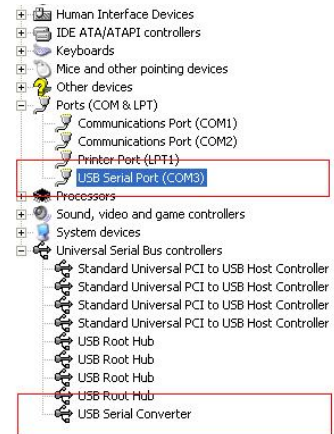
Step 25: Select **Load VCP** in the **Advanced** tab
Click **OK**



Step 26: Unplug USB TO RS232 Adapter on your computer
Reconnect the device to USB port on your PC again
Please refer to the following chart verify that it is installed correctly

Step 27: **Installation finished**

Congratulations, installation is successful



Canada
25 Interchange Way
Vaughan, ON L4K 5W3
Tel: 905-660-4655 Fax: 905-660-4113

U.S.A.
4575 Witmer Industrial Estates
Niagara Falls, NY 14305
Tel: 1-888-660-4655 Fax: 1-888-660-4113

Printed in Canada
Subject to change without prior notice