



CONDOMINIUM AND COMMON AREA ALARM SYSTEM



Condominium and Common Area Alarm System

CondoSecure's technology has been used for decades in leading brands of proprietary alarm systems specifically for multi-unit residential high-rise applications. CondoSecure allows condominium owners to enjoy complete individual protection with a central reporting center for on-site guard staff and the forthcoming Mircom Remote Report. (Please contact us for details.)

Protecting property in high-rise residential buildings has never been easier or so accurate. CondoSecure displays the entire condominium complex data on Windows-based PCs, for the Concierge to view the whole picture with just a glance, as well as providing a full range of recorded activity data for later review. Alarm location and type are presented clearly and color coded.



CondoSecure is perfect for both new construction as well as retrofit applications where it is replacing an old analog annunciation system or an orphaned digital keypad system. CondoSecure technology allows the use of existing wiring in these cases.

The CondoSecure system Front-End software will handle 50 "guard-users", divided between "Operator", "Administrator" and "Technical Admin" users - allowing various levels of system configuration access.

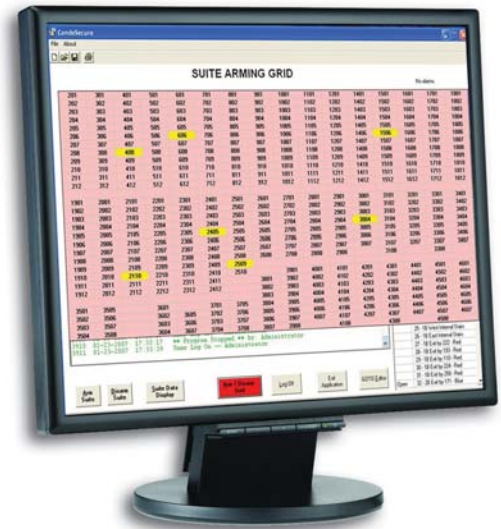


The main screen provides a running, printable log of events, alarms, acknowledgements and who responded to them. The "Suite Data Display" provides a complete overview of the building(s) monitored, providing real-time open/closed/alarm/emerg/service graphics for all monitored suites.



Multi-Unit Residential Security Features

- May be installed in new construction or in existing structures
- Can be custom programmed to suit your building or OEM requirements
- RS-232 connection from host PC to CondoSecure riser control panels (Optional TCP/IP available)
- Multi-level passwords and user levels
- QuickPrint of activity log: last 8-12 hour shift, last day, define range. Print in seconds all activity, alarms only, arm/disarm reports.
- 480 Suite capacity and 96 common zones per panel - 4 panels max. per system for almost 2000 suite capability
- Easy installation for new construction and retrofit applications
- Direct replacement for most orphaned Suite Panel systems from other manufacturers.
- All transactions recorded in a serialized format to discourage attempts to compromise the system and printable as hard copy
- Customizable for any OEM integrator



MCS-2010 Keypad Features:

- 2 operator codes – Main and 'Maid/Guest' codes
- Variable entry/exit times
- Int-Ext loops / Smoke / Gas inputs
- Instant Arm / Chime / Emergency / Alarm Memory functions
- Fail-safe trouble reporting to pinpoint line connection trouble immediately
- Insuite keypads can only be operated by the resident utilizing their personal four digit code
- Personal suite codes may be changed by the resident without any service call

The basic CondoSecure system includes the main control for each building connected to the central security desk PC running Windows 2000/XP/Vista operating software. This is often the same PC that is running the Access Control and providing Front Desk staff with resident information lookup software. Each suite can be monitored with a single door contact or via an MCS-2010 keypad for full functional abilities. Insuite keypads allow the connection of many other detection devices such as infrared detectors, remote panic buttons or smoke/gas detectors.

Keypads are connected in a simple riser-chain using two wires for power, one common control wire and one wire for each 30 floors of the condo tower. A 2 x 18 power wire and a 4 x 22 Station Z wire will provide connectivity for up to 90 floors.

Smoke detectors can be connected to the central processor to be monitored by the system. Common area or insuite carbon monoxide detectors can be connected to the central processor to be monitored by the system. In addition to these, the system can also monitor any sort of building system, boiler alarms, freeze detection, pump failures, and other as may be required.

CondoSecure is a complete security system for high-rise residential buildings, providing real-time information to security or concierge personnel to monitor all of the security devices in the building.



MIRCOM is the largest privately held independent designer and manufacturer of Fire Alarm Life Safety and Telephone Access products in North America.



CANADA

25 Interchange Way
Vaughan (Toronto), Ontario
L4K 5W3
Telephone: 905.660.4655
Fax: 905.660.4113

U.S.A.

4575 Witmer Industrial Estates
Niagara Falls, NY 14305
Telephone: 888.660.4655
Fax: 888.660.4113
Website: www.mircom.com
Email: mail@mircom.com

DISTRIBUTED BY: