

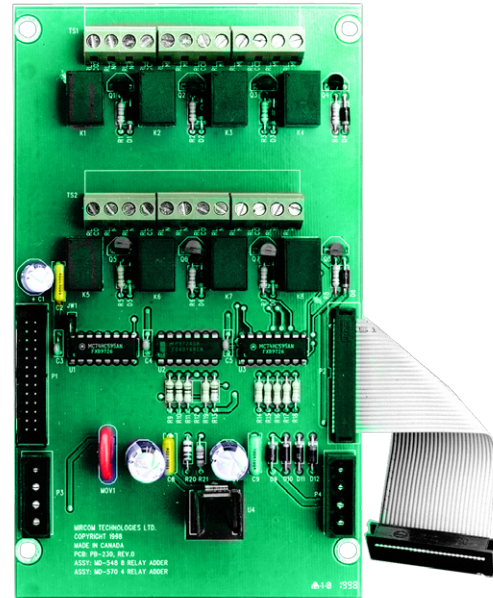
## FA-1000 SERIES

## AUXILIARY MODULES

The FA-1000 Series Microprocessor Based Fire Alarm System can be configured to meet virtually any requirements. To facilitate this flexibility, the panel has a number of add-on modules which allow the system to perform certain functions. The following modules have been designed to adapt the system to suit the particular requirements of a building.

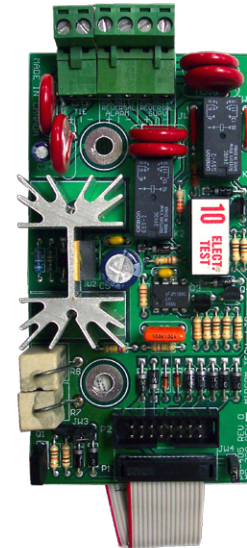
### RM-1008A Eight Relay Circuit Module

The RM-1008A Eight Relay Circuit Module provides eight programable Form C relays. Each relay is rated for 28 VDC @ 1 Amp max. Each relay is annunciated for configuration on the front display board of the MCC-1024-6 or MCC-1024-12 Main Chassis or ECH-1048 Expander Chassis. The RM-1008A Relay Adder Module comes with removeable terminal blocks for easy wiring and servicing. The module connects via cable to the board on the main or expander chassis. The RM-1008A also mounts in the FX-2000 main and expander chassis.



### PR-300 Polarity Reversal & City Tie Module

The PR-300 Polarity Reversal & City Tie Module allows connection to two different types of monitoring systems. The City Tie provides an output of 24 VDC at 210 mA max. The module supervises the City Tie connection and will provide a system trouble if not connected. A terminating resistor is supplied with the module. The Polarity Reversal provides a 24 VDC output for normal condition and a polarity reverse 24 VDC output for alarm. The module is also capable of transmitting a system trouble "Zero Volts." This option is jumper selectable. The output current is limited to 8 mA.



CATALOG NUMBER **5624**

NOT TO BE USED FOR INSTALLATION PURPOSES.

Mircom reserves the right to make changes at any time without notice in prices, colours, materials, components, equipment, specifications and models and also to discontinue models.

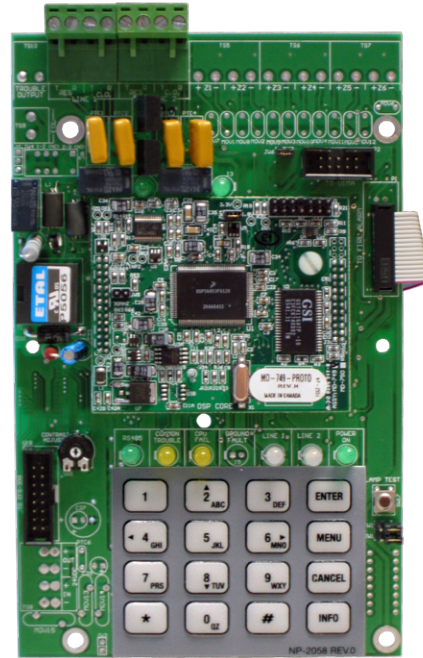
## UDACT-300A Digital Alarm Communicator Transmitter/Dialer Module

The UDACT-300A Digital Alarm Communicator Transmitter/Dialer Module allows Mircom's FA-1000 Series Fire Alarm Control Panels to transmit Alarm, Supervisory and Trouble information on two telephone lines to a monitoring facility.

The UDACT-300A is powered by the host fire alarm control panel and communicates with the fire alarm control panel via an RS-485 data link. The Digital Communicator can be programmed for dual line operation and uses the Security Industry Association (SIA) and Ademco Contact ID reporting protocols.

The UDACT-300A can be configured locally via the on-board keypad and the CFG-300 Configuration Tool or with a UIMA programming tool and a computer with an available serial or USB port. In addition the UDACT-300A can be remotely configured using a personal computer with a modem.

The UDACT-300A can be configured for either DACT or UDACT operation. In DACT mode the Digital Communicator reports common alarm, trouble and supervisory information. In UDACT mode the Digital Communicator reports point specific information.



### Ordering Information

Model	Description
RM-1008A	Eight Relay Circuit Module c/w eight Form C relays (Rated for 28 VDC @ 1 Amp. max. per relay)
PR-300	Polarity Reversal and City Tie Module
UDACT-300A	Universal Digital Alarm Communication Transmitter/Dialer Module

NOT TO BE USED FOR INSTALLATION PURPOSES.



#### Canada

25 Interchange Way  
Vaughan, Ontario L4K 5W3  
Telephone: (905) 660-4655  
Fax: (905) 660-4113

#### U.S.A.

4575 Witmer Industrial Estates  
Niagara Falls, NY 14305  
Toll Free: (888) 660-4655  
Fax Toll Free: (888) 660-4113

Distributed by:

