

MIX-M500FP Firephone Control Module

25 Interchange Way
 Vaughan, Ontario L4K-5W3
 Ph: 905-660-4655 Fax: 905-660-4113

SPECIFICATIONS

Normal Operating Voltage:	15 to 32 VDC
Maximum Current Draw:	7.5mA (LED on)
Average Operating Current:	2.4mA (LED flashing)
SLC Wiring Resistance:	40 Ohms
Supervisory Wiring Resistance:	50 Ohms
Handset Offhook Resistance:	400 to 1,500 Ohms
External Supply Voltage (between Terminals T10 and T11)	Regulated 24VDC
Temperature Range:	32°F to 120°F (0°C to 49°C)
Humidity:	10% to 93% Non-condensing
Dimensions:	4.5" H x 4.275" W x 1.4"D (Mounts to a 4" square by 2 1/8" deep box.)
Accessories:	SMB500 Electrical Box; CB500 Barrier

BEFORE INSTALLING

This information is included as a quick reference installation guide. If the modules will be installed in an existing operational system, inform the operator and local authority that the system will be temporarily out of service. Disconnect power to the control panel before installing the modules.

NOTICE: This manual should be left with the owner/user of this equipment.

GENERAL DESCRIPTION

MIX-M500FP Firephone Control Modules are intended for use in intelligent, two-wire systems, where the individual address of each module is selected using the built-in rotary switches. This module is used to connect a remote firefighter telephone to a centralized telephone console. A ringing sound is provided at each off-hook handset until it is connected to the console. Wiring to individual telephone jacks and handsets is supervised, and status is reported to the panel as NORMAL, TROUBLE, or TELEPHONE. The MIX-M500FP has two pairs of output termination points available for fault-tolerant wiring, and includes a panel-controlled LED indicator.

COMPATIBILITY REQUIREMENTS

To ensure proper operation, this module shall be connected to Listed compatible system control panels only.

MOUNTING

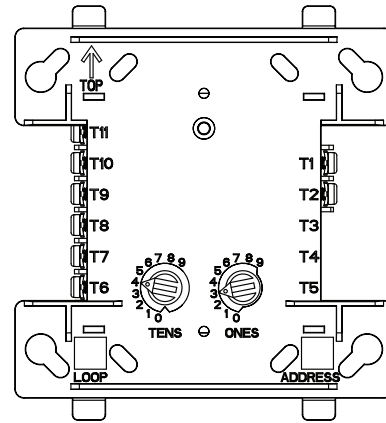
This module mounts directly to 4" square electrical boxes (see Figure 2A). The box must have a minimum depth of 2 1/8". Flush mounted electrical boxes (SMB500) are available.

WIRING

NOTE: All wiring must conform to applicable local codes, ordinances and regulations.

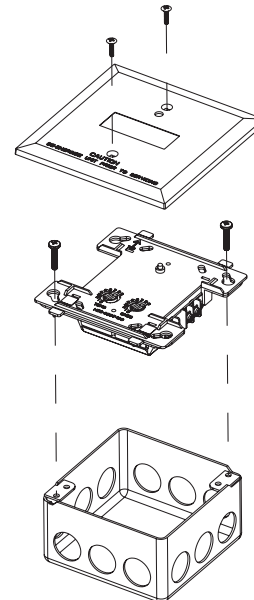
1. Install module wiring in accordance with the job drawings and appropriate wiring diagrams (Figures 3-4).
2. Set the address on the module per job drawings.
3. Secure module to electrical box (supplied by installer), as shown in Figure 2.

FIGURE 1. CONTROLS AND INDICATORS



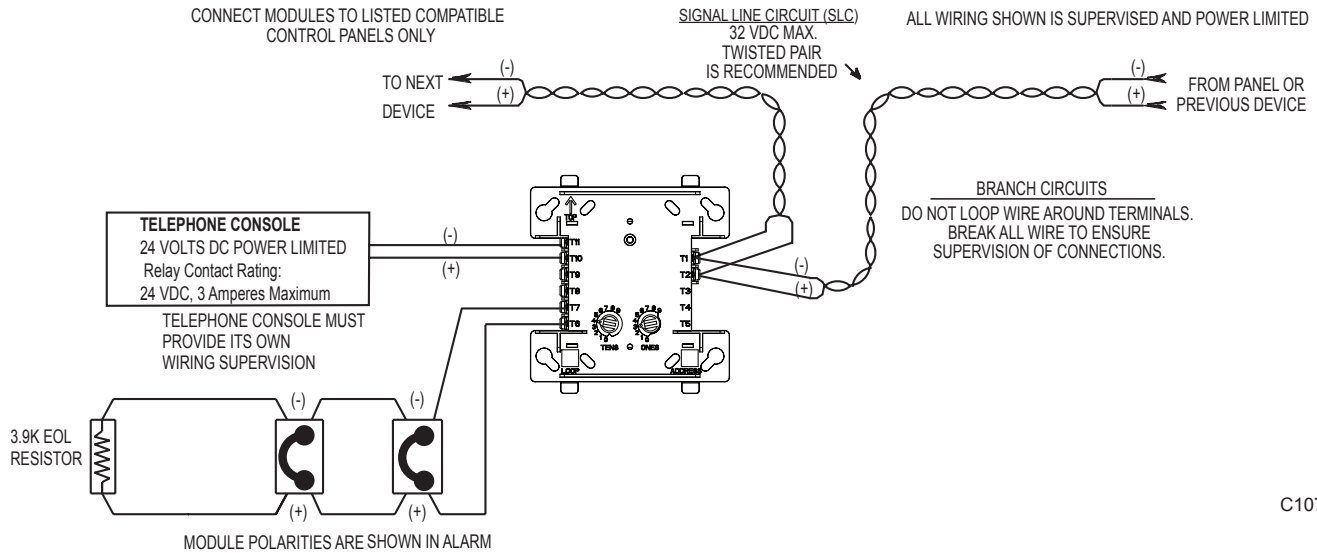
C1059-01

FIGURE 2. MODULE MOUNTING:



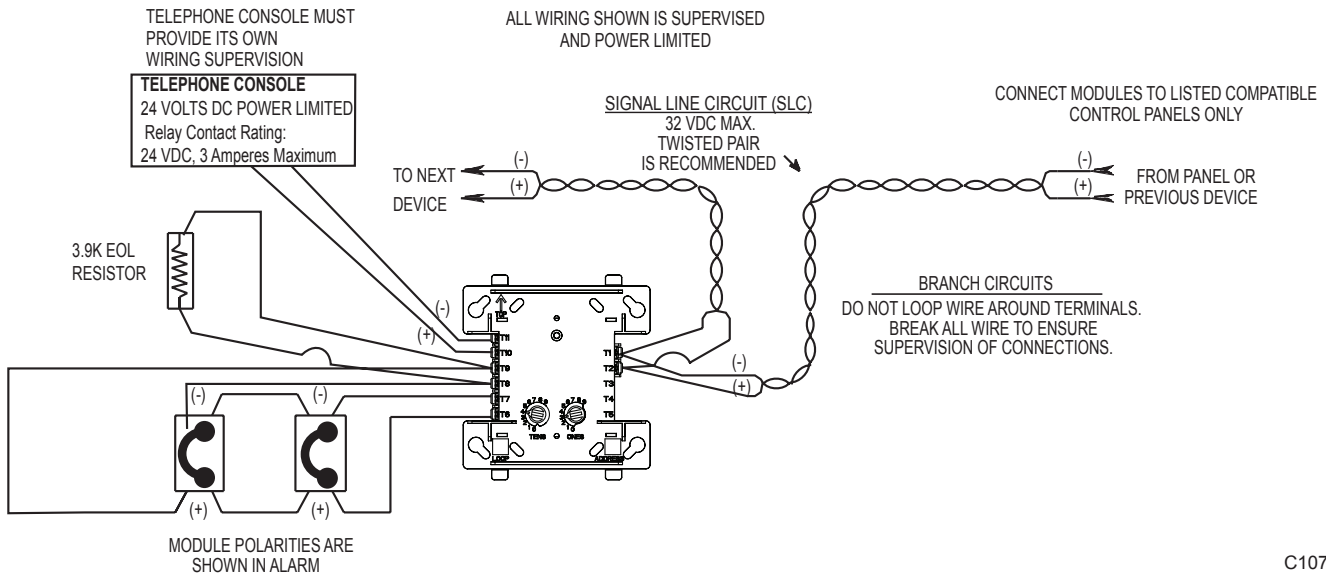
C1070-03

FIGURE 3. TYPICAL CIRCUIT CONFIGURATION, NFPA STYLE Y, CLASS B STYLE WIRING:



C1076-06

FIGURE 4. TYPICAL FAULT TOLERANT CIRCUIT CONFIGURATION, NFPA STYLE Z, CLASS A STYLE WIRING:



C1077-05

THREE-YEAR LIMITED WARRANTY

Mircom warrants its enclosed product to be free from defects in materials and workmanship under normal use and service for a period of three years from date of manufacture. Mircom makes no other express warranty for the enclosed product. No agent, representative, dealer, or employee of the Company has the authority to increase or alter the obligations or limitations of this Warranty. The Company's obligation of this Warranty shall be limited to the replacement of any part of the product which is found to be defective in materials or workmanship under normal use and service during the three year period commencing with the date of manufacture. After phoning Mircom's number 905-660-4655 for a Return Authorization number, send defective units postage prepaid to: Mircom, Returns Department, RA # _____, 25 Interchange Way, Vaughan,

Ontario L4K-5W3. Please include a note describing the malfunction and suspected cause of failure. The Company shall not be obligated to replace units which are found to be defective because of damage, unreasonable use, modifications, or alterations occurring after the date of manufacture. In no case shall the Company be liable for any consequential or incidental damages for breach of this or any other Warranty, expressed or implied whatsoever, even if the loss or damage is caused by the Company's negligence or fault. Some states do not allow the exclusion or limitation of incidental or consequential damages, so the above limitation or exclusion may not apply to you. This Warranty gives you specific legal rights, and you may also have other rights which vary from state to state.



All relay switch contacts are shipped in the standby state (open) state, but may have transferred to the activated (closed) state during shipping. To ensure that the switch contacts are in their correct state, modules must be made to communicate with the panel before connecting circuits controlled by the module.

FCC STATEMENT

This equipment has been tested and found to comply with the limits for a Class B digital device, pursuant to Part 15 of the FCC rules. These limits are designed to provide reasonable protection against harmful interference. This equipment generates, uses, and can radiate radio frequency energy and,

if not installed and used in accordance with the instruction manual, may cause harmful interference to radio communications. Operation is subject to the following two conditions: (1) This device may not cause harmful radiation, and (2) this device must accept any interference received, including interference that may cause undesired operation. This Class B digital apparatus complies with Canadian ICES-003.